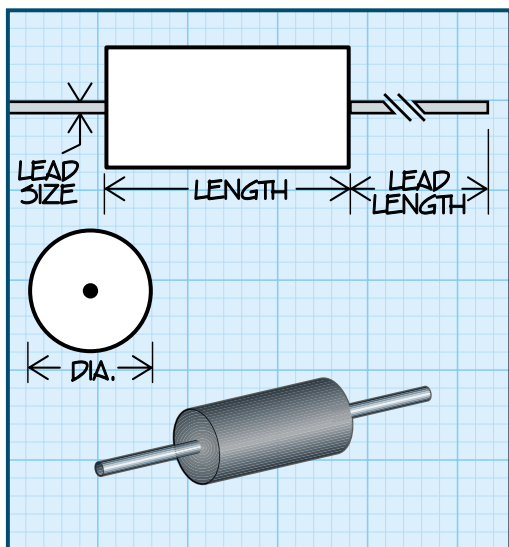


# Series 4211R 4211

RoHS  
Compliant

Traditional  
First Quality

## Axial Leaded Filter Bead



**Impedance** measured at indicated frequencies, utilizing an HP 4191A at 25°C

**Lead Material** capable of meeting MIL-STD-202, Method 208 solderability requirements

**Marking** Individual part marking is not available

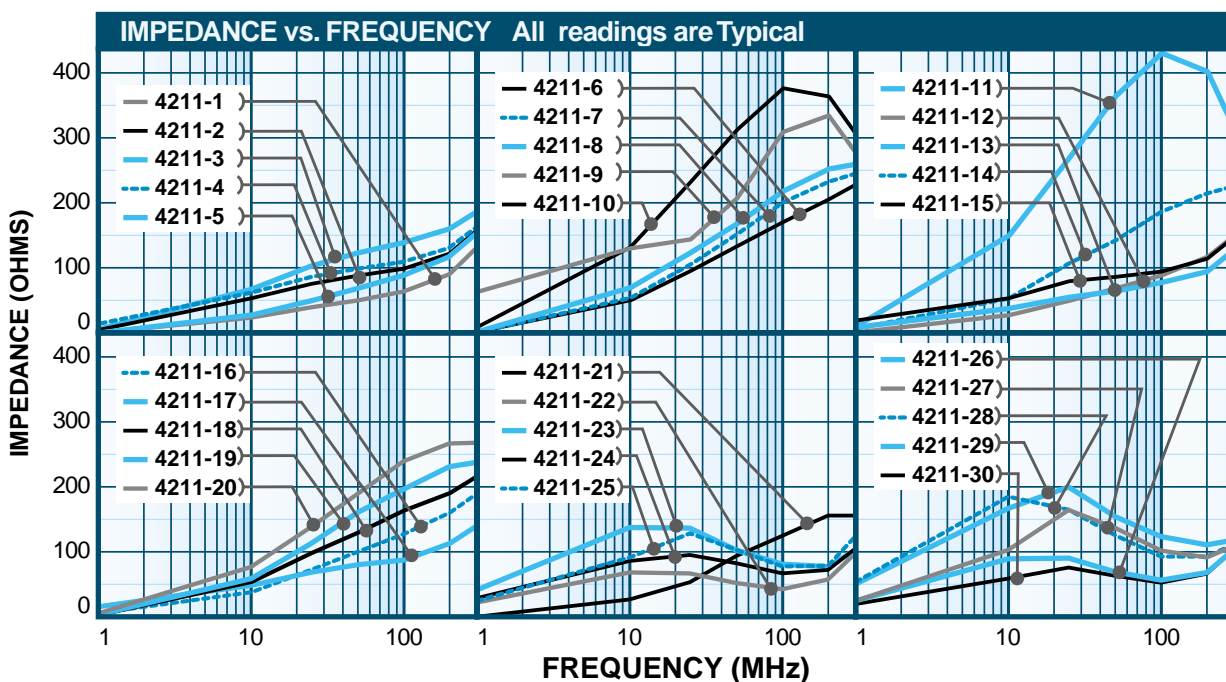
**Packaging** Tape & reel: 14" reel. Series 4211-1 to 4211-8 and 4211-12 to 4211-30, 4000 pieces max. Series 4211-9 to 4211-11, 1000 pieces max. 12" reel not available

DASH NUMBER\*  
DIAMETER ±.010  
LEAD SIZE ±.002  
LENGTH  
TOLERANCE  
10 MHz  
25 MHz  
100 MHz  
250 MHz

FERRITE CORE							
DASH NUMBER*	DIAMETER ±.010	LEAD SIZE ±.002	LENGTH	TOLERANCE	10 MHz	25 MHz	100 MHz
-1	0.138	0.025	0.175	±.010	≥ 39	54 - 82	
-2	0.138	0.025	0.350	±.020	≥ 70	106 - 160	
-3	0.138	0.025	0.263	±.010	≥ 52	80 - 120	
-4	0.138	0.025	0.300	±.020	≥ 60	88 - 132	
-5	0.138	0.025	0.236	±.010	≥ 48	72 - 109	
-6	0.138	0.025	0.375	±.010	≥ 77	120 - 180	
-7	0.138	0.025	0.450	±.015	≥ 93	144 - 216	
-8	0.138	0.025	0.545	±.025	≥ 114	176 - 264	
-9	0.385	0.032	0.450	±.015	≥ 154	216 - 325	
-10	0.385	0.032	0.550	±.020	≥ 188	264 - 397	
-11	0.385	0.032	0.650	±.020	≥ 224	312 - 469	
-12	0.138	0.025	0.206	±.010	≥ 43	66 - 98	
-13	0.138	0.025	0.175	±.010		50 min.	72 - 108
-14	0.138	0.025	0.350	±.020		105 min.	134 - 202
-15	0.138	0.025	0.263	±.010		78 min.	100 - 150
-16	0.138	0.025	0.300	±.020		90 min.	115 - 173
-17	0.138	0.025	0.236	±.010		70 min.	90 - 136
-18	0.138	0.025	0.375	±.010		112 min.	144 - 216
-19	0.138	0.025	0.450	±.015		135 min.	170 - 255
-20	0.138	0.025	0.545	±.025		163 min.	206 - 310
-21	0.138	0.025	0.206	±.010		61 min.	80 - 120
-22	0.138	0.025	0.175	±.010	≥38	49-73	
-23	0.138	0.025	0.350	±.020	≥75	92-138	
-24	0.138	0.025	0.263	±.010	≥56	69-103	
-25	0.138	0.025	0.300	±.020	≥64	79-118	
-26	0.138	0.025	0.236	±.010	≥50	62-93	
-27	0.138	0.025	0.375	±.025	≥88	108-162	
-28	0.138	0.025	0.450	±.015	≥100	124-187	
-29	0.138	0.025	0.545	±.025	≥121	152-228	
-30	0.138	0.025	0.206	±.010	≥44	54-82	

\*Complete part # must include series # PLUS the dash #  
For further surface finish information, refer to TECHNICAL section of this catalog.

Lead Length 1 Inch min.



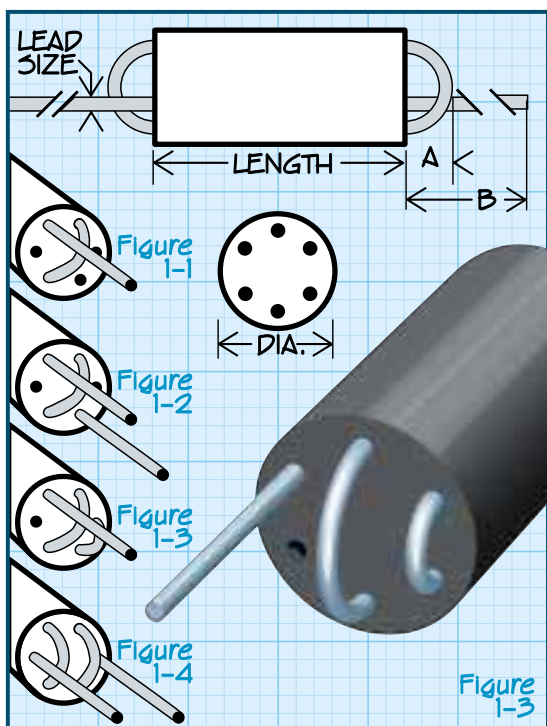
For more detailed graphs, contact factory

# Series 4212R 4212

RoHS  
Compliant

Traditional  
First Quality

## Wound Beads



DASH NUMBER\*  
FIGURE  
# OF TURNS  
@ 10 MHz  
@ 50 MHz  
@ 100 MHz  
@ 150 MHz  
@ 200 MHz  
@ 220 MHz

DASH NUMBER*	FIGURE	# OF TURNS	@ 10 MHz	@ 50 MHz	@ 100 MHz	@ 150 MHz	@ 200 MHz	@ 220 MHz
-1	1-3	2½	—	—	750	700	—	400
-2	1-3	2½	325	—	575	525	—	—
-3	1-1	1½	—	325	425	—	400	—
-4	1-1	1½	170	320	375	—	—	—
-5	1-2	2	—	525	600	—	600	—
-6	1-2	2	240	520	480	—	—	—
-7	1-4	3	—	950	900	—	600	—
-8	1-4	3	400	800	550	—	—	—

\*Complete part # must include series # PLUS the dash #

For further surface finish information,  
refer to TECHNICAL section of this catalog.

### Physical Parameters

	Inches	Millimeters
Length	0.374 to 0.414	9.50 to 10.51
Diameter	0.216 to 0.256	5.48 to 6.35
Lead Size		
AWG #24 TCW	0.0185 to 0.0215	0.47 to 0.55
A	0.12 Max.	3.05 Max.
B	1.10 Min.	28.0 Min.

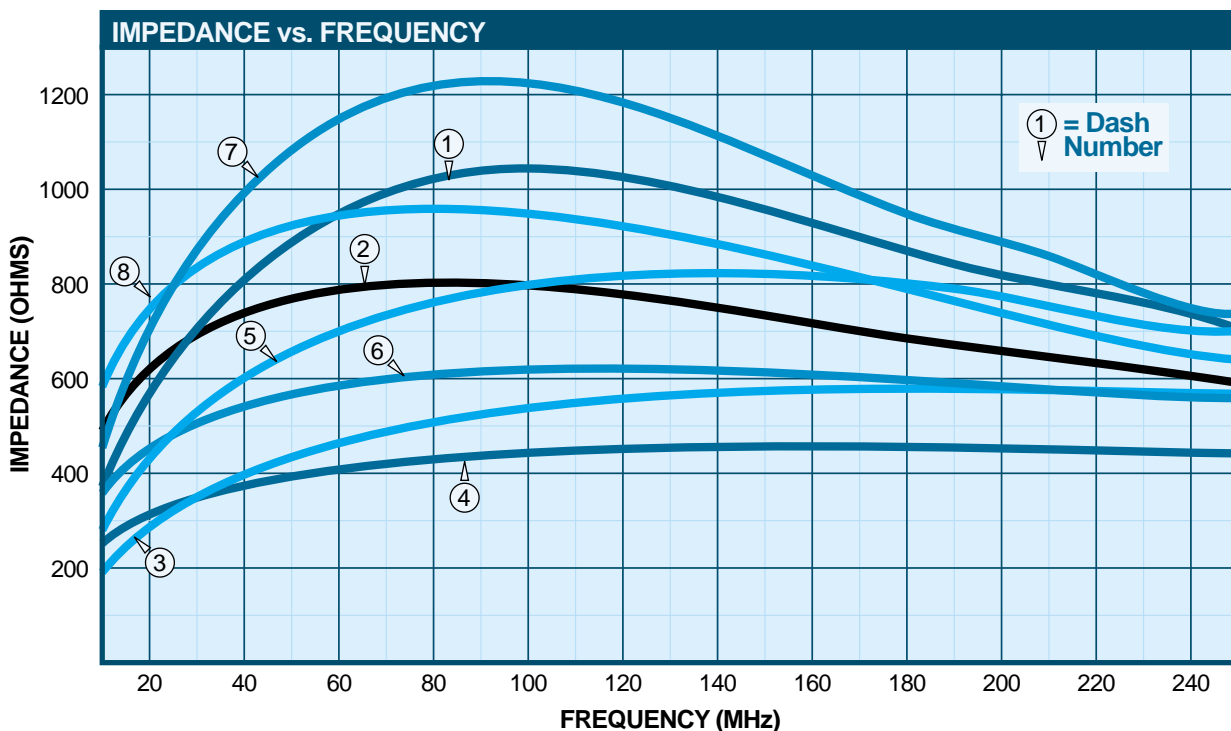
Impedances measured on HP 4191A Impedance Analyzer.

High resistivity ferrite material eliminates the need to insulate windings.

Lead Wire Plated copper

Packaging Bulk only

For more detailed graphs, contact factory



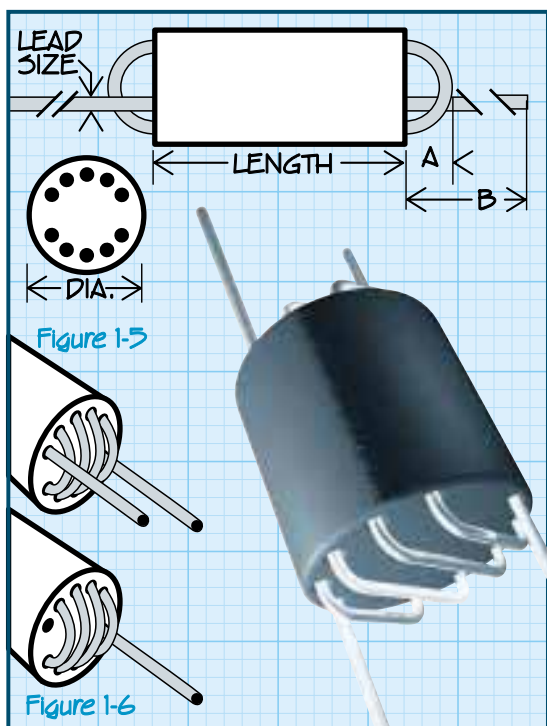
SUPPRESSORS

# Series 4214R 4214

RoHS  
Compliant

Traditional  
First Quality

## Wound Beads



DASH NUMBER*	FIGURE	# OF TURNS	MINIMUM IMPEDANCE				
			@ 10 MHz	@ 50 MHz	@ 100 MHz	@ 150 MHz	@ 200 MHz
-2	1-5	2½ x 2	370	590	450	350	280
-4	1-6	4½	700	1100	650	350	270

\*Complete part # must include series # PLUS the dash #

For further surface finish information, refer to TECHNICAL section of this catalog.

**Wide Band Chokes** 10 hole ferrite slugs, made in API-2 Material, with 2 x 2.5 or 4.5 turns of tinned copper wire.

**Applications** Interference suppression

### Physical Parameters

	Inches	Millimeters
Length	0.388 to 0.402	9.98 to 10.02
Diameter	0.388 to 0.402	9.98 to 10.02
Lead Size		
AWG #24 TCW	0.0185 to 0.0215	0.47 to 0.55
A	0.14 Max.	3.55 Max.
B	1.10 Min.	28.0 Min.

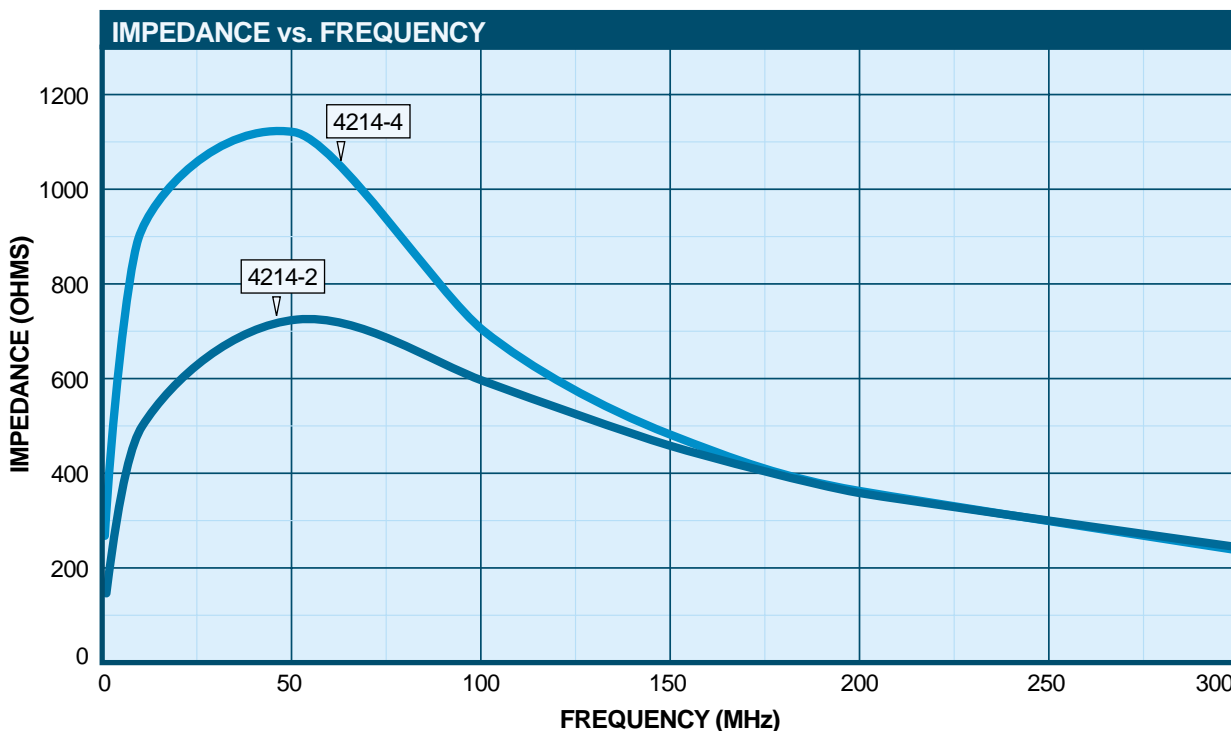
**Impedances** measured on HP 4191A Impedance Analyzer.

**High resistivity ferrite material** eliminates the need to insulate windings.

**Lead Wire** Plated copper

**Packaging** Bulk only

SUPPRESSORS



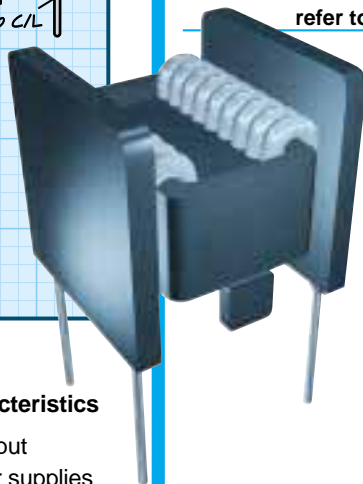
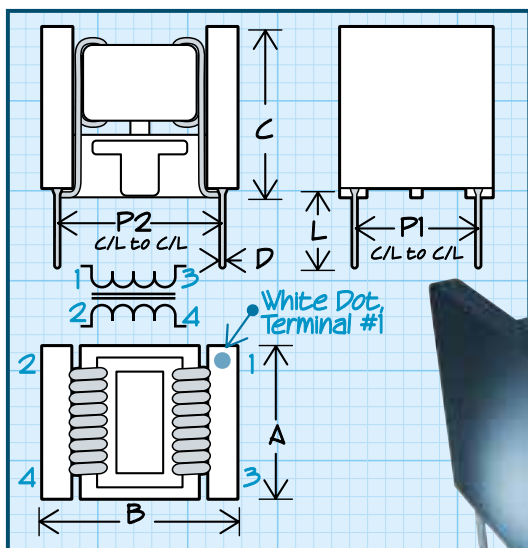
For more detailed graphs, contact factory

# Series 9565R 9565

RoHS  
Compliant

Traditional  
First Quality

## High Performance Line Filters



**Compact sized, high performance ferrites with superior frequency characteristics**

**A serious countermeasure** against output common-mode noise for switching power supplies and switching AC adapters.

**Vastly improves noise immunity** for personal computers, word processors, peripherals, terminals and equipment using microprocessors.

### Physical Parameters

	Inches	Millimeters
A	0.295 Max	7.5 Max
B	0.413 Max	10.5 Max
C	0.314 Max	8.0 Max
D	0.023 Nom	0.6 Nom
L	0.18 ± 0.03	4.6 ± 1.0
P1	0.19 ± 0.01	5.0 ± 0.5
P2	0.295 ± 0.01	7.5 ± 0.5

**Operating Temperature Range** -55°C to +125°C

**Packaging** Bulk only.

**Mechanical configuration** Units designed for easy thru-hole mounting. Ferrite core; base carries a UL94V-O rating.

**Insulation Resistance** >10 MOhm (100 VDC, between lines)

**Test Voltage** 200 VDC (1 minute between lines)

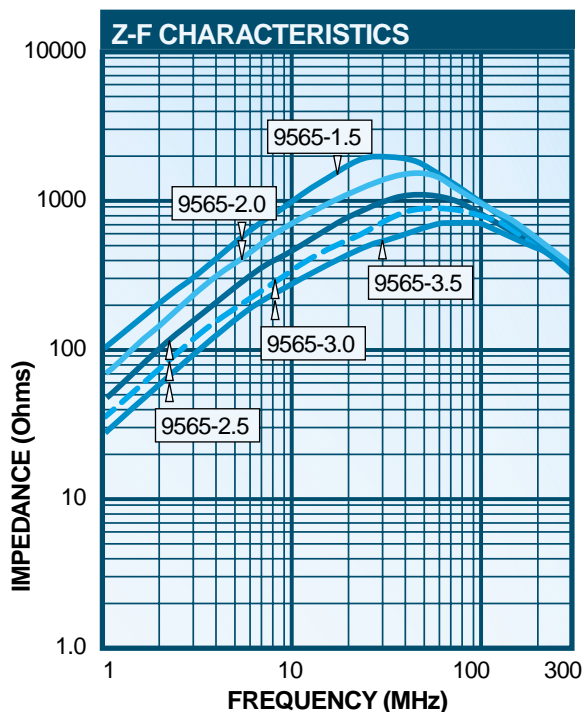
**Impedances are measured** on the HP4191A Impedance Analyzer.

**Inductances are measured** on the Wayne Kerr 3245 Inductance Analyzer.

DASH NUMBER*	FREQUENCY RANGE (MHz)	VOLTAGE RATING	INDUCTANCE (µH) Min.	CURRENT RATING MAXIMUM (Amps)	DC RESISTANCE MAXIMUM (mOhms) PER LINE	25 MHz	100 MHz
-1.5	10 - 200	50V	22	1.5	60	1820	900
-2.0	10 - 200	50V	15	2.0	40	1220	900
-2.5	10 - 200	50V	10	2.5	30	780	840
-3.0	10 - 200	50V	7.0	3.0	20	600	760
-3.5	10 - 200	50V	5.0	3.5	15	440	655

\*Complete part # must include series # PLUS the dash #

For further surface finish information, refer to TECHNICAL section of this catalog.



For more detailed graphs, contact factory